



***Bryn Mawr
Presbyterian Church***

June 3, 2018
8:00 a.m., Chapel
2nd Sunday after Pentecost

WELCOME TO BMPC

TODAY'S SCHEDULE

Childcare (infant - age 5)

7:45 a.m. - 12:30 p.m.
Education Building, Rm. 102

8:00 a.m. Worship, Chapel

10:00 Worship, Sanctuary

See calendar for a complete schedule.

Art Exhibit Reception

11:15 a.m., Ministries Center

NEW HERE? We are pleased that you are joining us as we worship God this morning. Information about our programs is available near the main entrance. We invite you to participate in any of our programs, ministries and mission opportunities, as they are open to all.

JOIN US FOR FELLOWSHIP. Stop by the Ministries Center Court for a cup of coffee between 8:00 - 10:00 a.m. and for Lemonade on the Lawn (rain location: Ministries Center Court) after the 10:00 a.m. worship service.

TO ASSIST YOU DURING WORSHIP. Children's bulletins with crayons may be found near the main entrance. If you are unable to come forward for Communion, please let an usher or server know, and Communion will be brought to you.

Subscribe to our BMPC eNews by adding your email address to the Fellowship Register. For additional information about today's schedule, see the calendar at the back of this bulletin.

www.BMPC.org

GATHERING AROUND THE WORD

PRELUDE

WELCOME

David B. Smith

† CALL TO WORSHIP

One: O Lord, open my lips

All: And my mouth shall proclaim your praise.

One: You created the day and the night, O God;

All: You set the sun and the moon in their places;

One: You set the limits of the earth; you made summer and winter.

Praise the Lord!

All: The Lord's name be praised.

† HYMN 641

When in Our Music God Is Glorified

ENGELBERG

CALL TO CONFESSION

AND PRAYER OF CONFESSION *(in unison)*

Almighty God, you poured your Spirit upon gathered disciples,
creating bold a new community of faith, the church.

We confess that we hold back the force of your spirit among us.

We do not listen for your word of grace, speak the good news of your love,
or live as a people made one in Christ.

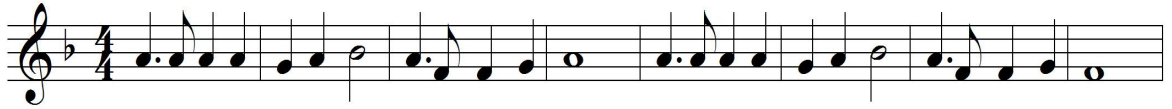
Have mercy on us, O God.

Transform our timid lives by the power of your Spirit,
and fill us with a flaming desire to be your faithful people,
doing your will for the sake of Jesus Christ our Lord.

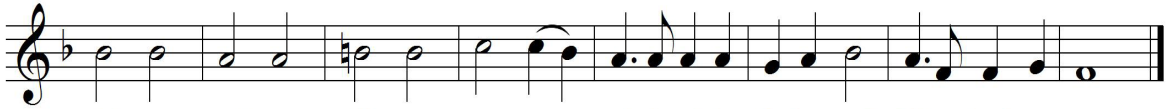
A moment of silence for personal reflection and confession.

ASSURANCE OF PARDON

CONGREGATIONAL RESPONSE



Spir-it of the liv-ing God, fall a-fresh on me. Spir-it of the liv-ing God, fall a-fresh on me.



Melt me; mold me; fill me; use me. Spir-it of the liv-ing God, fall a-fresh on me.

*Text and Music © 1935 Birdwing Music (admin. EMICMGPublishing.com).
All rights reserved. Reprinted under OneLicense.net #A-716211.*

HEARING THE WORD

PRAYER FOR ILLUMINATION

Craig Johnson

FIRST LESSON 2 Corinthians 4:5-6, 13-15 (*p. 180 in pew Bible*)

Craig Johnson

SECOND LESSON Psalm 139:1-12 (*p. 577 in pew Bible*)

Agnes W. Norfleet

One: The Word of the Lord.

All: **Thanks be to God.**

SERMON

Utterance of Knowledge
Summer Series on Life in the Spirit

Agnes W. Norfleet

† **HYMN 28**

You Are Before Me, Lord

SURSUM CORDA

RESPONSE TO THE WORD

THE SACRAMENT OF THE LORD'S SUPPER

David B. Smith

You are invited to come forward, using the center aisle, to partake of the Lord's Supper by intinction (dipping a piece of bread into the cup); return to your seat using the side aisle. Gluten- and casein-free elements are on the center table.

You are invited to bring your offering when you come forward.

THE INVITATION TO COMMUNION AND THE GREAT THANKSGIVING

One: The Lord be with you.

All: And also with you.

One: Lift up your hearts.

All: We lift them to the Lord.

One: Let us give thanks to the Lord our God.

All: It is right to give our thanks and praise.

THE LORD'S PRAYER

Our Father who art in heaven, hallowed be thy name, thy kingdom come, thy will be done, on earth as it is in heaven. Give us this day our daily bread. And forgive us our trespasses, as we forgive those who trespass against us. And lead us not into temptation, but deliver us from evil. For thine is the kingdom, and the power, and the glory, forever. Amen.

COMMUNION OF THE PEOPLE

PRAYER OF DEDICATION

Agnes W. Norfleet

† **HYMN 542** God Be with You Till We Meet Again GOD BE WITH YOU

† **SENDING AND PASSING OF THE PEACE**

One: The peace of Christ be with you.

All: And also with you.

POSTLUDE

Worship Notes

SANCTUARY FLOWERS

Given to the glory of God and in loving memory of
Elizabeth and John Knorr III
John Knorr IV

ASSISTING WITH COMMUNION

Deacon Craig Johnson

USHERING

Tom Hays

BULLETIN COVER

Galatians 5:22-23 © 2012 Timothy R. Botts | Eyekons

Announcements

LOOKING FOR A CHURCH HOME? Consider learning more about being in community here by attending our “Discover BMPC” class on Mon., June 4 at 7:00 p.m. in the Education Building. Register online at www.bmpc.org > Calendar > Open Registrations. FranklynPottorff@bmpc.org.

VACATION BIBLE CAMP. Mon., June 18 - Fri., June 22, BMPC campus. VBC begins with a kick-off on Sun., June 17. This year we explore creation: “In the Beginning...” Register online at www.bmpc.org > Calendar > Open Registrations. Sign up as a youth or adult volunteer! MaryRichards@bmpc.org.

WEDNESDAY NIGHT DINNERS. Due to the popularity of our Wednesday Night Dinners, they have been extended through Wed., June 13. Menus are posted on the homepage of our website, and they are available at the Reception Desk in the Ministries Center. The dinners resume on Wed., Sept. 12.

KEEP US UP-TO-DATE. If you have moved recently or your contact information has changed, please let us know. We’d also appreciate updated photos for our membership database to help our pastors become better acquainted with our congregation. Send updated information and/or pictures to JaneWilber@bmpc.org.

SUMMER SUNDAY SCHOOL. Help is needed for our summer Sunday School (ages 4 through Grade 3) beginning on June 10 through Aug. 19. Sign up for one week or more! MaryRichards@bmpc.org.

SOULS SHOT EXHIBIT. Wyndmoor artist Laura Madeleine has co-curated this art exhibit that features portraits of victims of gun violence. You may view it along the ramp leading to the second floor and balcony of the Ministries Center.

BOOK CENTER. Check out our sales section! Books for all ages and all interests! Open Sundays following worship and weekdays from 9:00 a.m. to 4:30 p.m. Payment made at the Reception Desk on weekdays. [Kat MacMurray, Katmac2@icloud.com](mailto:KatMacMurray@icloud.com).

Today

CONGREGATIONAL MULTI-MEDIA EXHIBIT. On view through Sun., Sept. 2. Featuring artists of any media with a focus on visual interpretations of hymns from the new Presbyterian Hymnal. An Artists’ Reception will be held today from 11:15 a.m. to 1:00 p.m. in the Ministries Center. StephanieSpeakman@bmpc.org.

This Week

HOLY LEISURE. Fri., June 8, 6:00-9:00 p.m., home of Donna Barrickman. Connie O’Connor leads our discussion of *From Convent to Boardroom*. Register with your food and drink donation: [Janet White, janetw298@verizon.net](mailto:JanetWhite, janetw298@verizon.net).

Next Sunday

SUNDAE SUNDAY. June 10, 11:00 a.m., Front Lawn (rain location, Gymnasium). Celebrate summer with ice cream and toppings (non-dairy option available) and welcome our new members. You also are invited to tour the Education Building and get a sneak preview of an exciting video about our upcoming plans to renovate this space.

Upcoming

GREAT DECISIONS. Tues., June 12, 2:30 p.m., Rosemont Presbyterian Village Auditorium. All are welcome to join the discussion of Media and Foreign Policy. Marilyn Irwin, 484-380-3685.

SUMMER CHOIR. Begins Sun., June 17. Come to church on Sundays at 9:00 a.m. for a short rehearsal in the choir loft, then stay and sing for the 10:00 a.m. service. Summer choir is simple (one anthem and hymns), and informal (no robes). No long-term commitment; no need to sign up in advance. StephanieSpeakman@bmpc.org.

NAVIGATING THE NEWS: IS THERE A CHRISTIAN RESPONSE TO CURRENT EVENTS? Sundays, June 17 - July 8, 11:15 a.m., Witherspoon Parlor. Spend four weeks this summer in conversation and study with BMPC pastors as we wrestle with some of the most divisive topics facing us as Christians in the world today. CarolSchmidt@bmpc.org.

URBAN SUBURBAN BOOK GROUP. Tues., June 19, Noon, Converse House Parlor. Discussion of *Book of Joy: Lasting Happiness in a Changing World* by Dalai Lama, Desmond Tutu, and Douglass Adams. Edelen Carroll, carrollvirgo@verizon.net.

MAIN LINE ADULT DAY CENTER (MLADC) OPEN HOUSE. Sun., June 24, following the 10:00 a.m. worship service. Come view the exciting renovations. MLADC is located in Foerderer House next to the Radnor Street entrance to the Ministries Center. Pam Barton, Center Director, and MLADC board members will give tours and answer questions. MLADC is a mission of BMPC in partnership with Main Line Health.

Save the Date

MIDDLE SCHOOL MISSION TRIP: NEW YORK CITY. July 8-12. For rising sixth to eighth graders, \$299 per person. Experience the city that never sleeps and engage in meaningful projects. Register online at www.bmpc.org > Calendar > Open Registrations. Scholarships available. Registration deadline: July 1. DavidSmith@bmpc.org.

HIGH SCHOOL MISSION TRIP: MEXICO CITY. July 22-28. For rising ninth graders to graduating seniors, \$1,300 per person. ConeXión Mosaico hosts our team. ConeXión Mosaico is a multi-faceted community ministry that addresses urban poverty holistically, allowing urban “slum” communities to experience lasting transformation. Register online at www.bmpc.org > Calendar > Open Registrations. Scholarships available. Registration deadline: Today, June 3. DavidSmith@bmpc.org.

CAMP KIRKWOOD. Aug. 5-11. For rising sixth to rising 12th graders, \$499 per person. Camp is the best week of summer! Register online at www.bmpc.org > Calendar > Open Registrations. Scholarships available. Registration deadline: July 18. DavidSmith@bmpc.org.

Caring & Sharing

CASSEROLE BLITZ. Sat., June 16, 8:30 a.m. Family-friendly event (children over four) making casseroles for Philadelphia area food cupboards. Sandie Nicholson, sandiekev@verizon.net.

HOSTS FOR HOSPITALS. Hosts for Hospitals provides in-home hospitality for out-of-town patients and families. If you are interested in becoming a host family, contact Sally Young, sutsme2@aol.com or Margo Bennett, margobennett@comcast.net. For information about the program, visit www.hostsforhospitals.org.

ENVIRONMENTAL JUSTICE COMMITTEE RECYCLING BATTERIES. Recycling batteries allows for the reuse of resources and decreases harmful environmental effects by reducing mining and refining of virgin materials. A container is on the bottom shelf of the bookcase next to the Reception Desk in the Ministries Center.

WEEKEND GROCERY COLLECTION. Did you know that 10 percent of students in Lower Merion School District receive free or reduced-price lunches during the school year? Help us partner with Main Line Reform Temple to prepare weekend grocery bags to give to local families this summer. Please bring the following donations to BMPC and place in collection bins in the Ministries Center and Education Building: instant oatmeal packs, shelf-stable milk boxes, macaroni and cheese, tuna pouches, granola bars, fruit cups and cereal. CarolSchmidt@bmpc.org.

HELP FIGHT HUNGER. Contribute to emergency food cupboards, homeless shelters, and hunger relief organizations by using the white Hunger envelopes in the pews or noting "Hunger" on the memo line of your check. You also may bring canned goods (soups, peanut butter, stews, ravioli) each Sunday to add to the Hunger Baskets in the Narthex. CarolSchmidt@bmpc.org.

HOSPITAL INFORMATION. Due to current privacy laws, it is more difficult for our pastors to know when BMPC members have been admitted to a hospital. Call the church office at 610-525-2821 if you or anyone you know is hospitalized, and let us know if and when you volunteer at any local hospitals.

This Week's Calendar

*For more information, visit our website at www.bmpc.org,
call the church office, or contact communications@bmpc.org.*

Today, June 3

- 7:45 a.m. Childcare, Ed. Bldg., Rm. 102
8:00 a.m. **Worship with Communion, Chapel**
10:00 a.m. **Worship with Sanctuary Choir, Sanctuary**
Worship Together Sunday for Children & Youth in Grades K - 12
11:00 a.m. Lemonade on the Lawn
11:15 a.m. Art Exhibit Reception, Conference Room & Witherspoon Parlor

Monday, June 4

- 7:00 p.m. Discover BMPC Membership Class, Ed. Bldg., Rm. 104

Tuesday, June 5

- 9:00 a.m. Tuesday Morning Out, Ed. Bldg, Rms. 101 & 102
10:30 a.m. Tai Chi, Gymnasium
1:00 p.m. Dance for Parkinson's Disease, Gymnasium

Wednesday, June 6

- 5:30 p.m. Wednesday Night Dinner, Congregational Hall
7:00 p.m. Child & Youth Protection Training, Gloucester Room
Worldwide Ministries Committee Meeting, Fullerton Room

Thursday, June 7

- 8:30 a.m. Laurel House Meeting, Gloucester Room
10:00 a.m. Artists' Gathering, Gloucester Room
11:00 a.m. Senior Exercise Class, Gymnasium
Caring Ministries Planning Meeting, Fullerton Room
3:00 p.m. Baldwin School Commencement, Sanctuary
5:30 p.m. Children & Youth Protection Policy Committee Meeting, Fullerton Room
6:00 p.m. Refugee Committee Meeting, Gloucester Room
Boy Scout Troop 19, Gymnasium

Friday, June 8

- 9:00 a.m. Friday Morning Out, Ed. Bldg., Rms. 101 & 102
10:00 a.m. A Matter of Balance, Gloucester Room & Witherspoon Parlor
6:00 p.m. Holy Leisure, home of Donna Barrickman

Saturday, June 9

- 7:00 a.m. Saturday Morning Men's Group, Converse House Parlor
10:00 a.m. Bereavement Group, Fullerton Room & Middleton Center
1:00 p.m. Katherine Blenko Memorial Service, Chapel

Sunday, June 10

- 8:00 a.m. **Worship with Communion, Chapel**
10:00 a.m. **Worship with Baptism & Sanctuary Choir, Sanctuary**
The Rev. Dr. Agnes W. Norfleet will preach.
Summer Sunday School for Grades K - 3.
Worship Together Sunday for Grades 4 - 12.
11:00 a.m. Sundae Sunday, Front Lawn, and tours of Education Building

Worship Staff

Agnes W. Norfleet, Pastor

Rebecca Kirkpatrick, Associate Pastor for Adult Education & Mission

Rachel Pedersen, Associate Pastor for Children & Family Ministry

Franklyn C. Pottorff, Associate Pastor for Congregational Life & Stewardship

David B. Smith, Interim Associate Pastor for Youth Ministry

Mary Steege, Associate Pastor for Pastoral Care & Senior Adults

Jeffrey Brillhart, Director of Music & Fine Arts

Edward L. Landin, Assistant Director of Music

Contact Information



Bryn Mawr Presbyterian Church

625 Montgomery Avenue, Bryn Mawr, PA 19010

610-525-2821

www.bmpc.org

[Facebook.com/BrynMawrPres](https://www.facebook.com/BrynMawrPres) • [Instagram.com/BrynMawrPres](https://www.instagram.com/BrynMawrPres)

24/7 Answering Service for Pastoral Emergencies: 610-525-2821

Main Line Adult Day Center: 610-527-4220

The Middleton Center: 610-525-0766 • info@middletoncenter.org

The Weekday School (Preschool): 610-525-2821, ext. 8840