

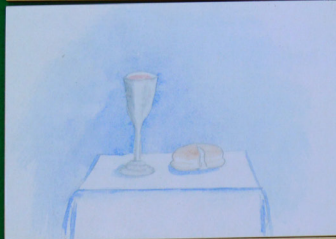
OUR FATHER WHO ART IN HEAVEN,

יהוה

HALLOWED BE THY NAME.



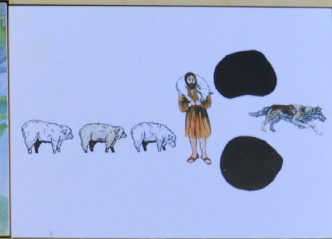
THY KINGDOM COME, THY WILL BE DONE,  
ON EARTH AS IT IS IN HEAVEN.



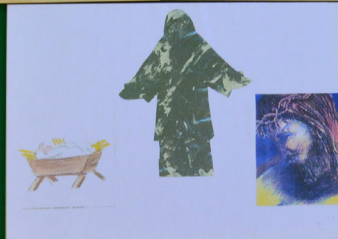
GIVE US THIS DAY, OUR DAILY BREAD.



AND FORGIVE US OUR TRESPASSES, AS WE  
FORGIVE THOSE WHO TRESPASS AGAINST US.



LEAD US NOT INTO TEMPTATION,  
BUT DELIVER US FROM EVIL.



FOR THINE IS THE KINGDOM,  
THE POWER, AND THE GLORY FOREVER.

AMEN

# *Bryn Mawr Presbyterian Church*

August 27, 2017  
8:00 a.m., Chapel  
21st Sunday in Ordinary Time

# WELCOME TO BMPC

## TODAY'S SCHEDULE

### **Childcare (infant - age 5)**

7:45 a.m. - 12:30 p.m.  
Education Building, Rm. 102

### **8:00 a.m. Worship, Chapel**

### **10:00 a.m. Worship, Sanctuary**

#### **Grades K - 12**

Attend Worship  
10:00 a.m., Sanctuary

**NEW HERE?** We are pleased that you are joining us as we gather in worship this day! We would love the chance to say hello, so please fill out a visitor card found in the pew rack and place it in the offering plate.

**LOOKING FOR A CHURCH HOME?** Consider learning more about being in community here by attending one of our 'Discover BMPC' classes being offered in October. Contact the Rev. Franklyn Pottorff, FranklynPottorff@bmpe.org.

**JOIN US FOR FELLOWSHIP.** Stop by the Ministries Center Court for a cup of coffee between 8:00 - 10:00 a.m. and join us for Lemonade on the Lawn after the 10:00 a.m. worship service (inclement weather location: Ministries Center Court).

**TO ASSIST YOU DURING WORSHIP.** Children's bulletins with crayons may be found near the main entrance. If you are unable to come forward for Communion, please let an usher or server know, and Communion will be brought to you.

Subscribe to our BMPC eNews by adding your email address to the Fellowship Register. For additional information about today's schedule, see the calendar at the back of this bulletin.

[www.BMPC.org](http://www.BMPC.org)

# GATHERING AROUND THE WORD

## PRELUDE

## WELCOME

David B. Smith

## † CALL TO WORSHIP

One: Welcome this day to the house of our God!

**All: We are greeted in peace and in love.**

One: Welcome this day to the worship of our Creator.

**All: We worship in hope and with grace.**

One: Welcome this day to our community of faith,

**All: Where we are sisters and brothers in Christ.**

One: Let us worship God together.

## † HYMN 37

Let All Things Now Living

ASH GROVE

## CALL TO CONFESSION

### AND PRAYER OF CONFESSION *(in unison)*

Holy One, we long for connection with you.

We want to pour out our hearts before you and open ourselves to your wisdom.

We want you to sift and search through our desires.

We hope for your divine perspective,

for the steadying hand of your Holy Spirit upon our shoulders.

Yet, turning to you, we feel foolish or afraid.

We want to pray, but as we do, we feel our doubt,

or find ourselves confronted with a desire to control.

Give us the courage to be vulnerable, to be honest,

and to trust you as the God who loves and seeks the good of all.

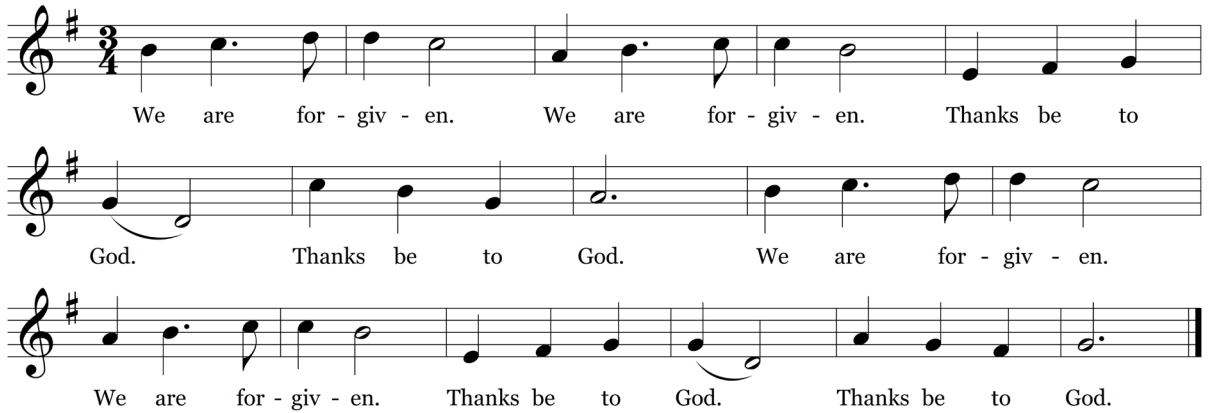
Teach us to pray; restore our sight, that we may commune with you each day.

And where we are unable to pray, let your Holy Spirit pray on our behalf.

*A moment of silence for personal reflection and confession.*

## ASSURANCE OF PARDON

## CONGREGATIONAL RESPONSE



We are for - giv - en. We are for - giv - en. Thanks be to  
God. Thanks be to God. We are for - giv - en.  
We are for - giv - en. Thanks be to God. Thanks be to God.

*Music © 1995 Hal H. Hopson. All rights reserved. Reprinted under OneLicense.net #A-716211.*

## HEARING THE WORD

### PRAYER FOR ILLUMINATION

Bill McKee

### FIRST LESSON

Psalm 138 (*p. 577 in pew Bible*)

Bill McKee

### SECOND LESSON

Luke 11:1-13 (*p. 72 in pew Bible*)

Mary Steege

One: The Word of the Lord.

All: **Thanks be to God.**

### SERMON

*Praying for a Change*

Mary Steege

† HYMN 175

Seek Ye First

LAFFERTY

# RESPONSE TO THE WORD

## THE SACRAMENT OF THE LORD'S SUPPER

*You are invited to come forward, using the center aisle, to partake of the Lord's Supper by intinction (dipping a piece of bread into the cup); return to your seat using the side aisle. Gluten- and casein-free elements are on the center table.*

*You are invited to bring your offering when you come forward.*

## THE INVITATION TO COMMUNION AND THE GREAT THANKSGIVING

One: The Lord be with you.

**All: And also with you.**

One: Lift up your hearts.

**All: We lift them to the Lord.**

One: Let us give thanks to the Lord our God.

**All: It is right to give our thanks and praise.**

## THE LORD'S PRAYER

Our Father who art in heaven, hallowed be thy name, thy kingdom come, thy will be done, on earth as it is in heaven. Give us this day our daily bread. And forgive us our trespasses, as we forgive those who trespass against us. And lead us not into temptation, but deliver us from evil. For thine is the kingdom, and the power, and the glory, forever. Amen.

## COMMUNION OF THE PEOPLE

### PRAYER OF DEDICATION

Mary Steege

† HYMN 23                      God, You Spin the Whirling Planets                      PLEADING SAVIOR

### † SENDING AND PASSING OF THE PEACE

One: The peace of Christ be with you.

**All: And also with you.**

## POSTLUDE

## **Worship Notes**

### **SANCTUARY FLOWERS**

Given to the glory of God and in loving memory of  
Ken Corson and Mark Janson

### **ASSISTING WITH COMMUNION**

Elder Bill McKee

### **USHERING**

Michelle LaFarge

### **BULLETIN COVER**

*The Lord's Prayer*

*The picture on the cover shows the story cards used to teach the Lord's Prayer in our Pre-K and Kindergarten classes. Each image draws on earlier lesson. These images and references help provide context and meaning to the individual petitions. Every year our students work on memorizing the Lord's Prayer during the season of Lent.*

## Today

**SUMMER CHOIR.** Through Sept. 3. Thank you to all who have sung this summer! There is one more opportunity to be a part of this group next Sunday, before the Sanctuary Choir returns on Sept. 10. Warm-up at 9:00 a.m. No need to sign up in advance.

## Announcements

**BE A “SECRET SAINT.”** Sponsor one of our many students who go away to college. Secret Saints let students know that BMPC cares about them through packages, cards, and most importantly, their prayers. Contact Jane Wilber, Parent Coordinator, [willbaway5@comcast.net](mailto:willbaway5@comcast.net).

**FALL CHOIR REGISTRATION.** We have opportunities for all ages (kindergarten and up) to become involved in music at BMPC. For registration details, contact [StephanieSpeakman@bmpc.org](mailto:StephanieSpeakman@bmpc.org).

**JOIN SANCTUARY CHOIR.** If you love to sing, we invite you to join Sanctuary Choir, a vibrant group of adults who worship God through music. Open auditions will be held today from 11:00 to 11:30 a.m. in the Choir Loft. No appointment necessary. To schedule an informal interview with Jeff Brillhart during the week, contact [StephanieSpeakman@bmpc.org](mailto:StephanieSpeakman@bmpc.org).

**UPDATE ON FLAGSTONE PROJECT.** Demolition, cement work and stone installation has begun on the west half of the walkway in front of the Sanctuary. On Sunday mornings, a ramp at the west Sanctuary entrance by the Ministries Center allows all entrances to be available. Weather permitting, Lemonade on the Lawn will take place in its usual location in front of the Sanctuary. The project is scheduled to be completed by the end of August.

## This Week

**BACK TO SCHOOL KICKOFF.** Tues., Aug. 29, 4:00 - 6:00 p.m., BMPC Front Lawn. Mark your calendars for a Vacation Bible Camp reunion and Back-to-School Kickoff for children up to fifth grade! See old and new friends, play games, and get ready for an exciting year ahead. Friends are welcome! [MaryRichards@bmpc.org](mailto:MaryRichards@bmpc.org).

## Upcoming

**MEN’S STUDY GROUP BEGINS.** Wed., Sept. 13, 10:00 a.m., Converse House Parlor and Library. Join Joshua Yoder in a discussion of *The Didache* (The Teaching of the Twelve Apostles) using a book by Aaron Milavec. Available for purchase for \$12 in the Ministries Center. [AmyBauer@bmpc.org](mailto:AmyBauer@bmpc.org).

**LOVING WELL RELATIONSHIP WORKSHOP.** Sat., Sept. 16, 9:00 a.m. – noon, Congregational Hall. The Middleton Center hosts this workshop with guest speaker, the Rev. Melanie Hammond Clark. She draws on the insights of author/counselor Gary Chapman's *The Five Love Languages* to help you improve relationships with partners, parents, children, friends and co-workers. Register: KikiMckendrick@bmpc.org.

**ADULT EDUCATION CLASSES BEGIN.** Sun., Sept. 17, 8:45 a.m. classes: Filling the Well, a discussion group for women, and Sunday Morning Discussion Group led by the Rev. Dr. Paul MacMurray. Books available in the Ministries Center. CarolSchmidt@bmpc.org.

## ***Save the Date***

**CONGREGATION-WIDE DAY OF SERVICE: HABITAT BUILD.** Sat., Sept. 29, 8:00 a.m. - 2:30 p.m., BMPC Front Lawn. Choose a shift or work all day. [www.bmpc.org](http://www.bmpc.org) > Calendar > Open Registrations. CarolSchmidt@bmpc.org.

**MUSEUM OF THE AMERICAN REVOLUTION, PHILADELPHIA.** Thurs., Oct. 5. Cost is \$30 per person and includes boxed lunch at the church and all tours. Meet at 11:15 a.m. for lunch and fellowship in Gloucester Room. Following lunch, participants board the bus, which departs from the back parking lot at Noon, and returns to BMPC no later than 5:00 p.m. Space is limited to 20. Register: AmyBauer@bmpc.org.

## ***Caring & Sharing***

**PEACE & GLOBAL WITNESS OFFERING.** This offering supports every level of the Presbyterian Church (USA) to work for peace and respond to injustice in their own contexts and around the globe. Envelopes are available in the pew holders on Sundays, Sept. 24 and Oct. 1. You can also donate noting "Peace and Global Witness Offering" on the memo line of your check. Phoebe Sheftel, [pasheftel@gmail.com](mailto:pasheftel@gmail.com).

**HABITAT FOR HUMANITY PHILADELPHIA.** Join the Habitat Philadelphia Global Village team working alongside Habitat Nicaragua to help with housing projects and also enjoy sightseeing opportunities. The 2018 build takes place in the town of Esteli, Nicaragua. Plans are for a late February or early March 2018. Cost: \$1,570 plus airfare. Deidra Duncan, Director of Engagement at Habitat Philadelphia, [deidrad@habitatphiladelphia.org](mailto:deidrad@habitatphiladelphia.org), 215-765-6000, ext. 34.

**HELP HARVEST AT BROAD STREET MINISTRY'S CAROUSEL HOUSE FARM.** Tuesdays, 5:30 - 7:30 p.m., 4300 Avenue of the Republic at Belmont Avenue, West Fairmount Park in Philadelphia. Harvested food is served at Broad Street Ministry meals and donated to local food pantries. Volunteers of all ages welcome! Pam Haynes Walsh, [haynes-walsh@comcast.net](mailto:haynes-walsh@comcast.net).

**HELP FIGHT HUNGER.** Contribute to emergency food cupboards, homeless shelters, and hunger relief organizations by using the white Hunger envelopes in the pews or noting "Hunger" on the memo line of your check. CarolSchmidt@bmpc.org.



# **Upcoming Special Events**

## **Rally Day**

***Sun., Sept. 10, 11:00 a.m., Front Lawn (rain location: Ministries Center)***

Join us as we begin a new season in ministry! Our celebration will include picnic food, entertainment, fall program information from our ministry areas, and fellowship for all ages. All welcome; bring a friend!

## **Installation of our new Associate Pastors**

***Sun., Sept. 17, 4:00 p.m., Sanctuary***

The Rev. Franklyn C. Pottorff, Associate Pastor for Congregational Life and Stewardship, and the Rev. Mary Steege, Associate Pastor for Pastoral Care and Senior Adults, will be installed in a special worship service. Reception following.

## **Service Day: Framing Blitz with Habitat for Humanity Philadelphia**

***Sat., Sept. 30, 8:30 a.m. to 3:00 p.m., Front Lawn***

Choose one or more shifts to help build the frame of a new home; no experience necessary. CarolSchmidt@bmpc.org.

## **Blessing of the Animals**

***Sun., Oct. 1, 4:00 p.m., Front Lawn***

Gather for fellowship, singing, scripture, prayers, and individual blessings of companion animals. AmyBauer@bmpc.org.

## **Community Forum Distinguished Speaker Series**

***Mon., Oct. 16, 7:00 p.m., Sanctuary***

Barbara Bradley Hagerty, former religion reporter for National Public Radio, discusses her latest book, *Life Reimagined*, a frank and imaginative look at the science of thriving in the second half of life. Book signing to follow in Ministries Center.

## **2017 Rev. Dr. and Mrs. David B. Watermulder Theologian-in-Residence Series: The Rev. Dr. Beth Hessel, Speaker**

***Sundays, Oct. 22 and 29, 11:15 a.m., Congregational Hall***

In Dr. Hessel's first lecture, she will share her research into the Presbyterian response to the Japanese-American Internment during World War II, telling stories of Presbyterian missionaries who fought for justice for Japanese Americans. In her second lecture, she will help us make more historical connections between our theological traditions and the current events of the times in which our theology was shaped.

# ***This Week's Calendar***

*For more information, visit our website at [www.bmpc.org](http://www.bmpc.org),  
call the church office, or contact [communications@bmpc.org](mailto:communications@bmpc.org).*

## **Today, August 27**

- 7:45 a.m. Childcare (infant - 5 years old), Ed. Bldg., Rm. 102  
8:00 a.m. **Worship with Communion, Chapel**  
9:00 a.m. Summer Choir Rehearsal, Sanctuary Choir Loft  
10:00 a.m. **Worship with Summer Choir, Sanctuary**  
Worship Together Sunday for Children & Youth in Kindergarten - Grade 12  
11:00 a.m. Lemonade on the Lawn (inclement weather location: Ministries Center)

## **Monday, August 28**

- 6:30 p.m. Ushers' Dinner Meeting, Congregational Hall

## **Tuesday, August 29**

- 10:30 a.m. Tai Chi, Gymnasium  
4:00 p.m. Back-to-School Kick-Off, Ministries Center

## **Wednesday, August 30**

*No scheduled activities.*

## **Thursday, August 31**

- 10:00 a.m. Artists' Gathering, Gloucester Room

## **Friday, September 1**

*No scheduled activities.*

## **Saturday, September 2**

*No scheduled activities.*

## **Sunday, September 3**

- 8:00 a.m. **Worship with Communion, Chapel**  
10:00 a.m. **Worship with Summer Choir, Sanctuary**  
David B. Smith will preach.  
Sunday School for Kindergarten - Grade 3.

## *Save the Dates*

- Sat., Sept. 9** Bryn Mawr Day  
Saturday Morning Men's Group Resumes
- Sun., Sept. 10** Sunday School begins for ages 2 - grade 5; Rally Day Festivities
- Tues., Sept. 12** Monthly Labyrinth Walks Resume
- Wed., Sept. 13** Men's Study Group Begins  
Student Serve, Children and Youth Choir Rehearsals Begin  
Wednesday Dinners Resume
- Sat., Sept. 16** "Loving Well" Relationship Workshop
- Sun., Sept. 17** Youth and Parent Kick-off Meeting  
Adult Education Programs Resume
- Tues., Sept. 19** Tutoring Sign-ups Begin
- Wed., Sept. 20** Kick-off for Mission Partnership Year with Broad Street Ministry
- Thurs., Sept. 21** Doing Good Together Service Projects
- Sat., Sept. 23** Casserole Blitz
- Sun., Sept. 24** Third Grade Bible Presentation  
"Learn to Drum" with Kulu Mele
- Wed., Sept. 27** Coffee Cup Bible Study Begins
- Thurs., Sept. 28** Theology for Beginners Class Begins
- Mon., Oct. 2** Discover BMPC: New Member Orientation
- Thurs., Oct. 5** Senior Adult Council trip to Museum of the American Revolution
- Sat., Oct. 7** Discover BMPC: New Member Orientation
- Sun., Oct. 8** Organ recital with Joshua Stafford
- Wed., Oct. 11** High School New Mexico Mission Trip Presentation
- Sat., Oct. 14** Interfaith Climate Advisory Workshop  
Main Line Adult Day Center Bowling Fundraiser, Devon Lanes
- Sun., Oct. 15** Organ recital with Dexter Kennedy  
Middle School Mini Golf, Tee's Golf Center
- Sun., Oct. 22** Middle School Parent Education Program
- Sun., Oct. 29** High School Hayride, Sugartown Strawberries

## ***Worship Staff***

---

**Agnes W. Norfleet**, Pastor

**Rebecca Kirkpatrick**, Associate Pastor for Adult Education and Mission

**Rachel Pedersen**, Associate Pastor for Children and Family Ministry

**Franklyn C. Pottorff**, Associate Pastor for Congregational Life and Stewardship

**David B. Smith**, Interim Director, Youth Ministry

**Mary Steege**, Associate Pastor for Pastoral Care and Senior Adults

**Jeffrey Brillhart**, Director of Music and Fine Arts

**Edward L. Landin**, Assistant Director of Music

## ***Contact Information***

---

### **Bryn Mawr Presbyterian Church**

625 Montgomery Avenue, Bryn Mawr, PA 19010

610-525-2821

[www.bmpc.org](http://www.bmpc.org)

[Facebook.com/BrynMawrPres](https://www.facebook.com/BrynMawrPres) • [Instagram.com/BrynMawrPres](https://www.instagram.com/BrynMawrPres)

24/7 Answering Service for Pastoral Emergencies: 610-525-2821

Main Line Adult Day Center: 610-527-4220

The Middleton Center: 610-525-0766 • [info@middletoncenter.org](mailto:info@middletoncenter.org)

The Weekday School (Preschool): 610-525-2821, ext. 8840