

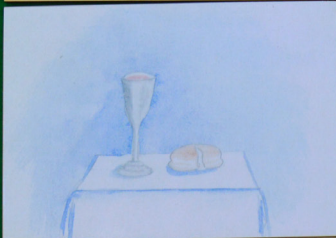
OUR FATHER WHO ART IN HEAVEN,

יהוה

HALLOWED BE THY NAME.



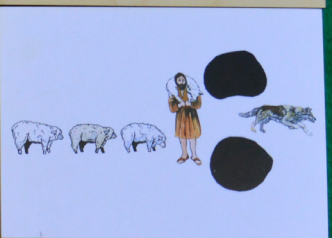
THY KINGDOM COME, THY WILL BE DONE,
ON EARTH AS IT IS IN HEAVEN.



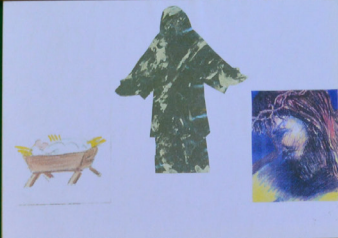
GIVE US THIS DAY, OUR DAILY BREAD.



AND FORGIVE US OUR TRESPASSES, AS WE
FORGIVE THOSE WHO TRESPASS AGAINST US.



LEAD US NOT INTO TEMPTATION,
BUT DELIVER US FROM EVIL.



FOR THINE IS THE KINGDOM,
THE POWER, AND THE GLORY FOREVER.

AMEN

Bryn Mawr Presbyterian Church

August 27, 2017
10:00 a.m., Sanctuary
21st Sunday in Ordinary Time

WELCOME TO BMPC

TODAY'S SCHEDULE

Childcare (infant - age 5)

7:45 a.m. - 12:30 p.m.
Education Building, Rm. 102

8:00 a.m. Worship, Chapel

10:00 a.m. Worship, Sanctuary

Grades K - 12

Attend Worship
10:00 a.m., Sanctuary

NEW HERE? We are pleased that you are joining us as we gather in worship this day! We invite you to stop by our 'welcome center' alcove on the left of the main entrance. We would love the chance to say hello!

LOOKING FOR A CHURCH HOME? Consider learning more about being in community here by attending one of our 'Discover BMPC' classes being offered in October. Contact the Rev. Franklyn Pottorff, FranklynPottorff@bmpc.org.

JOIN US FOR FELLOWSHIP. Stop by the Ministries Center Court for a cup of coffee between 8:00 - 10:00 a.m. and join us for Lemonade on the Lawn after the 10:00 a.m. worship service (inclement weather location: Ministries Center Court).

TO ASSIST YOU DURING WORSHIP. Large print bulletins and hearing assistance devices are available; ask an usher. Children's bulletins with crayons may be found near the main entrance.

Subscribe to our BMPC eNews by adding your email address to the Fellowship Register. For additional information about today's schedule, see the calendar at the back of this bulletin.

www.BMPC.org

GATHERING OF GOD'S PEOPLE

PRELUDE Movements from “Suite in a minor” Louis-Antoine Dornel

WELCOME Rebecca Kirkpatrick

† **CALL TO WORSHIP**

One: Welcome this day to the house of our God!

All: We are greeted in peace and in love.

One: Welcome this day to the worship of our Creator.

All: We worship in hope and with grace.

One: Welcome this day to our community of faith,

All: Where we are sisters and brothers in Christ.

One: Let us worship God together.

† **HYMN 37** Let All Things Now Living **ASH GROVE**

CALL TO CONFESSION

AND PRAYER OF CONFESSION (*in unison*)

Holy One, we long for connection with you.

We want to pour out our hearts before you and open ourselves to your wisdom.

We want you to sift and search through our desires.

We hope for your divine perspective,

for the steadying hand of your Holy Spirit upon our shoulders.

Yet, turning to you, we feel foolish or afraid.

We want to pray, but as we do, we feel our doubt,

or find ourselves confronted with a desire to control.

Give us the courage to be vulnerable, to be honest,

and to trust you as the God who loves and seeks the good of all.

Teach us to pray; restore our sight, that we may commune with you each day.

And where we are unable to pray, let your Holy Spirit pray on our behalf.

A moment of silence for personal reflection and confession.

ASSURANCE OF PARDON

† **GLORIA PATRI** (*in unison*) **Hymn 581**

Glory be to the Father and to the Son and to the Holy Ghost; as it was in the beginning, is now and ever shall be, world without end. Amen, amen.

Children are invited to come forward for the Children's Moment.

PROCLAMATION OF THE WORD

CHILDREN'S MOMENT

Rebecca Kirkpatrick

SENDING HYMN Go now, Children, with Our Blessing

During the Sending Hymn, children return to their pews.



Go now, children with our blessing, to love and serve the Lord. May God
Bless you, May God guard you, May the light of God shine upon you, and may
God be gracious to you. May the presence of God be with you. May the
presence of God be with you, and give you peace.

FIRST LESSON Psalm 138 (*p. 577 in pew Bible*)

David B. Smith

SECOND LESSON Luke 11:1-13 (*p. 72 in pew Bible*)

Mary Steege

One: The Word of the Lord.

All: **Thanks be to God.**

SERMON

Praying for a Change

Mary Steege

† **HYMN** 175

Seek Ye First

LAFFERTY

RESPONSE TO THE WORD

† AFFIRMATION OF FAITH (*in unison*)

David B. Smith

I believe in God the Father Almighty, Maker of heaven and earth,
and in Jesus Christ his only Son our Lord;
who was conceived by the Holy Ghost, born of the Virgin Mary,
suffered under Pontius Pilate, was crucified, dead, and buried;
he descended into hell; the third day he rose again from the dead;
he ascended into heaven,
and sitteth on the right hand of God the Father Almighty;
from thence he shall come to judge the quick and the dead.
I believe in the Holy Ghost; the holy catholic church;
the communion of saints; the forgiveness of sins;
the resurrection of the body; and the life everlasting. Amen.

~ The Apostles' Creed

PRAYERS OF THE PEOPLE AND THE LORD'S PRAYER

Our Father who art in heaven, hallowed be thy name, thy kingdom come, thy will be done, on earth as it is in heaven. Give us this day our daily bread. And forgive us our trespasses, as we forgive those who trespass against us. And lead us not into temptation, but deliver us from evil. For thine is the kingdom, and the power, and the glory, forever. Amen.

OFFERING AND OFFERTORY ANTHEM

Christ, Whose Glory Fills the Skies
Summer Choir

Rachel Aarons

Christ, whose glory fills the skies, Christ, the true, the only Light, sun of Righteousness, arise, triumph o'er the shades of night; Dayspring from on high, be near; Day-star, in my heart appear. Dark and cheerless is the morn unaccompanied by Thee; Joyless is the day's return till Thy mercy's beams I see; Till they inward light impart, glad my eyes, and warm my heart. Visit then this soul of mine, pierce the gloom of sin and grief; Fill me, Radiance divine, scatter all my unbelief; More and more Thyself display, shining to the perfect day.

*Please fill in the Fellowship Register at the end of your pew;
pass it down your row and back again.*

†	DOXOLOGY		Hymn 606
	Praise God, from whom all blessings flow; praise God, all creatures here below; praise God above, ye heavenly host; praise Father, Son, and Holy Ghost. Amen.		
†	PRAYER OF DEDICATION		
†	HYMN 23	God, You Spin the Whirling Planets	PLEADING SAVIOR
†	BENEDICTION WITH CHORAL RESPONSE		Mary Steege
	POSTLUDE	Trumpet Tune	Craig Phillips

Worship Notes

SANCTUARY FLOWERS

Given to the glory of God and in loving memory of
Ken Corson and Mark Janson

GREETING AND HOSTING

Bill and Phyllis Scott and the Whamond Family

GUEST SUMMER CHOIR CONDUCTOR

Sandra Stouffer

PLAYING THE CARILLON

Rob Mygatt

BULLETIN COVER

The Lord's Prayer

The picture on the cover shows the story cards used to teach the Lord's Prayer in our Pre-K and Kindergarten classes. Each image draws on earlier lesson. These images and references help provide context and meaning to the individual petitions. Every year our students work on memorizing the Lord's Prayer during the season of Lent.

Today

SUMMER CHOIR. Through Sept. 3. Thank you to all who have sung this summer! There is one more opportunity to be a part of this group next Sunday, before the Sanctuary Choir returns on Sept. 10. Warm-up at 9:00 a.m. No need to sign up in advance.

Announcements

BE A “SECRET SAINT.” Sponsor one of our many students who go away to college. Secret Saints let students know that BMPC cares about them through packages, cards, and most importantly, their prayers. Contact Jane Wilber, Parent Coordinator, willbaway5@comcast.net.

FALL CHOIR REGISTRATION. We have opportunities for all ages (kindergarten and up) to become involved in music at BMPC. For registration details, contact StephanieSpeakman@bmpc.org.

JOIN SANCTUARY CHOIR. If you love to sing, we invite you to join Sanctuary Choir, a vibrant group of adults who worship God through music. Open auditions will be held today from 11:00 to 11:30 a.m. in the Choir Loft. No appointment necessary. To schedule an informal interview with Jeff Brillhart during the week, contact StephanieSpeakman@bmpc.org.

UPDATE ON FLAGSTONE PROJECT. Demolition, cement work and stone installation has begun on the west half of the walkway in front of the Sanctuary. On Sunday mornings, a ramp at the west Sanctuary entrance by the Ministries Center allows all entrances to be available. Weather permitting, Lemonade on the Lawn will take place in its usual location in front of the Sanctuary. The project is scheduled to be completed by the end of August.

This Week

BACK TO SCHOOL KICKOFF. Tues., Aug. 29, 4:00 - 6:00 p.m., BMPC Front Lawn. Mark your calendars for a Vacation Bible Camp reunion and Back-to-School Kickoff for children up to fifth grade! See old and new friends, play games, and get ready for an exciting year ahead. Friends are welcome! MaryRichards@bmpc.org.

Upcoming

MEN’S STUDY GROUP BEGINS. Wed., Sept. 13, 10:00 a.m., Converse House Parlor and Library. Join Joshua Yoder in a discussion of *The Didache* (The Teaching of the Twelve Apostles) using a book by Aaron Milavec. Available for purchase for \$12 in the Ministries Center. AmyBauer@bmpc.org.

LOVING WELL RELATIONSHIP WORKSHOP. Sat., Sept. 16, 9:00 a.m. – noon, Congregational Hall. The Middleton Center hosts this workshop with guest speaker, the Rev. Melanie Hammond Clark. She draws on the insights of author/counselor Gary Chapman's *The Five Love Languages* to help you improve relationships with partners, parents, children, friends and co-workers. Register: KikiMckendrick@bmpc.org.

ADULT EDUCATION CLASSES BEGIN. Sun., Sept. 17, 8:45 a.m. classes: Filling the Well, a discussion group for women, and Sunday Morning Discussion Group led by the Rev. Dr. Paul MacMurray. Books available in the Ministries Center. CarolSchmidt@bmpc.org.

Save the Date

CONGREGATION-WIDE DAY OF SERVICE: HABITAT BUILD. Sat., Sept. 29, 8:00 a.m. - 2:30 p.m., BMPC Front Lawn. Choose a shift or work all day. www.bmpc.org > Calendar > Open Registrations. CarolSchmidt@bmpc.org.

MUSEUM OF THE AMERICAN REVOLUTION, PHILADELPHIA. Thurs., Oct. 5. Cost is \$30 per person and includes boxed lunch at the church and all tours. Meet at 11:15 a.m. for lunch and fellowship in Gloucester Room. Following lunch, participants board the bus, which departs from the back parking lot at Noon, and returns to BMPC no later than 5:00 p.m. Space is limited to 20. Register: AmyBauer@bmpc.org.

Caring & Sharing

PEACE & GLOBAL WITNESS OFFERING. This offering supports every level of the Presbyterian Church (USA) to work for peace and respond to injustice in their own contexts and around the globe. Envelopes are available in the pew holders on Sundays, Sept. 24 and Oct. 1. You can also donate noting "Peace and Global Witness Offering" on the memo line of your check. Phoebe Sheftel, pasheftel@gmail.com.

HABITAT FOR HUMANITY PHILADELPHIA. Join the Habitat Philadelphia Global Village team working alongside Habitat Nicaragua to help with housing projects and also enjoy sightseeing opportunities. The 2018 build takes place in the town of Esteli, Nicaragua. Plans are for a late February or early March 2018. Cost: \$1,570 plus airfare. Deidra Duncan, Director of Engagement at Habitat Philadelphia, deidrad@habitatphiladelphia.org, 215-765-6000, ext. 34.

HELP HARVEST AT BROAD STREET MINISTRY'S CAROUSEL HOUSE FARM. Tuesdays, 5:30 - 7:30 p.m., 4300 Avenue of the Republic at Belmont Avenue, West Fairmount Park in Philadelphia. Harvested food is served at Broad Street Ministry meals and donated to local food pantries. Volunteers of all ages welcome! Pam Haynes Walsh, haynes-walsh@comcast.net.

HELP FIGHT HUNGER. Contribute to emergency food cupboards, homeless shelters, and hunger relief organizations by using the white Hunger envelopes in the pews or noting "Hunger" on the memo line of your check. CarolSchmidt@bmpc.org.

Upcoming Special Events

Rally Day

Sun., Sept. 10, 11:00 a.m., Front Lawn (rain location: Ministries Center)

Join us as we begin a new season in ministry! Our celebration will include picnic food, entertainment, fall program information from our ministry areas, and fellowship for all ages. All welcome; bring a friend!

Installation of our new Associate Pastors

Sun., Sept. 17, 4:00 p.m., Sanctuary

The Rev. Franklyn C. Pottorff, Associate Pastor for Congregational Life and Stewardship, and the Rev. Mary Steege, Associate Pastor for Pastoral Care and Senior Adults, will be installed in a special worship service. Reception following.

Service Day: Framing Blitz with Habitat for Humanity Philadelphia

Sat., Sept. 30, 8:30 a.m. to 3:00 p.m., Front Lawn

Choose one or more shifts to help build the frame of a new home; no experience necessary. CarolSchmidt@bmpc.org.

Blessing of the Animals

Sun., Oct. 1, 4:00 p.m., Front Lawn

Gather for fellowship, singing, scripture, prayers, and individual blessings of companion animals. AmyBauer@bmpc.org.

Community Forum Distinguished Speaker Series

Mon., Oct. 16, 7:00 p.m., Sanctuary

Barbara Bradley Hagerty, former religion reporter for National Public Radio, discusses her latest book, *Life Reimagined*, a frank and imaginative look at the science of thriving in the second half of life. Book signing to follow in Ministries Center.

2017 Rev. Dr. and Mrs. David B. Watermulder Theologian-in-Residence Series: The Rev. Dr. Beth Hessel, Speaker

Sundays, Oct. 22 and 29, 11:15 a.m., Congregational Hall

In Dr. Hessel's first lecture, she will share her research into the Presbyterian response to the Japanese-American Internment during World War II, telling stories of Presbyterian missionaries who fought for justice for Japanese Americans. In her second lecture, she will help us make more historical connections between our theological traditions and the current events of the times in which our theology was shaped.

This Week's Calendar

*For more information, visit our website at www.bmpc.org,
call the church office, or contact communications@bmpc.org.*

Today, August 27

- 7:45 a.m. Childcare (infant - 5 years old), Ed. Bldg., Rm. 102
8:00 a.m. **Worship with Communion, Chapel**
9:00 a.m. Summer Choir Rehearsal, Sanctuary Choir Loft
10:00 a.m. **Worship with Summer Choir, Sanctuary**
Worship Together Sunday for Children & Youth in Kindergarten - Grade 12
11:00 a.m. Lemonade on the Lawn (inclement weather location: Ministries Center)

Monday, August 28

- 6:30 p.m. Ushers' Dinner Meeting, Congregational Hall

Tuesday, August 29

- 10:30 a.m. Tai Chi, Gymnasium
4:00 p.m. Back-to-School Kick-Off, Ministries Center

Wednesday, August 30

No scheduled activities.

Thursday, August 31

- 10:00 a.m. Artists' Gathering, Gloucester Room

Friday, September 1

No scheduled activities.

Saturday, September 2

No scheduled activities.

Sunday, September 3

- 8:00 a.m. **Worship with Communion, Chapel**
10:00 a.m. **Worship with Summer Choir, Sanctuary**
David B. Smith will preach.
Sunday School for Kindergarten - Grade 3.

Save the Dates

- Sat., Sept. 9** Bryn Mawr Day
Saturday Morning Men's Group Resumes
- Sun., Sept. 10** Sunday School begins for ages 2 - grade 5; Rally Day Festivities
- Tues., Sept. 12** Monthly Labyrinth Walks Resume
- Wed., Sept. 13** Men's Study Group Begins
Student Serve, Children and Youth Choir Rehearsals Begin
Wednesday Dinners Resume
- Sat., Sept. 16** "Loving Well" Relationship Workshop
- Sun., Sept. 17** Youth and Parent Kick-off Meeting
Adult Education Programs Resume
- Tues., Sept. 19** Tutoring Sign-ups Begin
- Wed., Sept. 20** Kick-off for Mission Partnership Year with Broad Street Ministry
- Thurs., Sept. 21** Doing Good Together Service Projects
- Sat., Sept. 23** Casserole Blitz
- Sun., Sept. 24** Third Grade Bible Presentation
"Learn to Drum" with Kulu Mele
- Wed., Sept. 27** Coffee Cup Bible Study Begins
- Thurs., Sept. 28** Theology for Beginners Class Begins
- Mon., Oct. 2** Discover BMPC: New Member Orientation
- Thurs., Oct. 5** Senior Adult Council trip to Museum of the American Revolution
- Sat., Oct. 7** Discover BMPC: New Member Orientation
- Sun., Oct. 8** Organ recital with Joshua Stafford
- Wed., Oct. 11** High School New Mexico Mission Trip Presentation
- Sat., Oct. 14** Interfaith Climate Advisory Workshop
Main Line Adult Day Center Bowling Fundraiser, Devon Lanes
- Sun., Oct. 15** Organ recital with Dexter Kennedy
Middle School Mini Golf, Tee's Golf Center
- Sun., Oct. 22** Middle School Parent Education Program
- Sun., Oct. 29** High School Hayride, Sugartown Strawberries

Worship Staff

Agnes W. Norfleet, Pastor

Rebecca Kirkpatrick, Associate Pastor for Adult Education and Mission

Rachel Pedersen, Associate Pastor for Children and Family Ministry

Franklyn C. Pottorff, Associate Pastor for Congregational Life and Stewardship

David B. Smith, Interim Director, Youth Ministry

Mary Steege, Associate Pastor for Pastoral Care and Senior Adults

Jeffrey Brillhart, Director of Music and Fine Arts

Edward L. Landin, Assistant Director of Music

Contact Information

Bryn Mawr Presbyterian Church

625 Montgomery Avenue, Bryn Mawr, PA 19010

610-525-2821

www.bmpc.org

[Facebook.com/BrynMawrPres](https://www.facebook.com/BrynMawrPres) • [Instagram.com/BrynMawrPres](https://www.instagram.com/BrynMawrPres)

24/7 Answering Service for Pastoral Emergencies: 610-525-2821

Main Line Adult Day Center: 610-527-4220

The Middleton Center: 610-525-0766 • info@middletoncenter.org

The Weekday School (Preschool): 610-525-2821, ext. 8840