



***Bryn Mawr
Presbyterian Church***

August 9, 2015
8:00 a.m., Chapel
Eleventh Sunday after Pentecost

Welcome to BMPC

Lord, Your word is a lamp to my feet and a light to my path.

NEW HERE? Please introduce yourself to a pastor after the service. Though many of our activities are on summer hiatus, we'd be glad to acquaint you with this church and its programs and ministries – whether current or upcoming in September. You are welcome to participate according to your interests and we hope you will return often.

TODAY'S SCHEDULE FOR CHILDREN AND YOUTH:

Childcare: 7:45 - 11:15 a.m., Ed. Bldg., Rm. 102

Nursery Care with special activities for age 2 - 3:

10:00 a.m., Ed. Bldg., Rm. 102

“Summer Chapel” for age 4 - grade 3: 10:15 a.m., Ed.

Bldg., Rm. 202

(10:00-10:15 a.m. families worship together in the Sanctuary)

If this is your first Sunday, please accompany your child.

Grades 4-12: in worship, Sanctuary.



GETTING CONNECTED. Please fill out the fellowship register as indicated during worship to let us know that you were here, to provide or update your contact information, and to identify yourself to others in your row so that you may greet each other after worship. To inquire about membership or other opportunities to enrich your life in faith, contact DonnaBarrickman@bmpc.org, ext. 8809.

JOIN US FOR FELLOWSHIP. Stop by the Ministries Center Court for a cup of coffee between 8:00 - 10:00 a.m. and join us for refreshments on the front lawn (weather permitting) at 11:00 a.m.

*As we gather for worship, please silence your cell phone
and prepare your heart and mind for the worship of God.*

Worship Staff:

Agnes W. Norfleet, Pastor

Rebecca Kirkpatrick, Associate Pastor for Adult Education & Mission

Rachel Pedersen, Associate Pastor for Children and Family Ministry

Kellen A. Smith, Associate Pastor for Youth, Their Families and College Ministries

Richard Wohlschlaeger, Interim Associate Pastor for Senior Adults & Pastoral Care

Jeffrey Brillhart, Director of Music and Fine Arts

Edward L. Landin, Assistant Director of Music

GATHERING AROUND THE WORD

PRELUDE

WELCOME

Rebecca Kirkpatrick

Please fill in the Fellowship Register at the end of your pew.

† CALL TO WORSHIP

One: Our hope is in the Lord.

All: For with the LORD there is steadfast love.

One: With the LORD there is power to redeem.

All: My soul waits for the Lord.

One: Let us worship the living Word.

† HYMN 476

O Worship the King, All Glorious Above!

LYONS

CALL TO CONFESSION

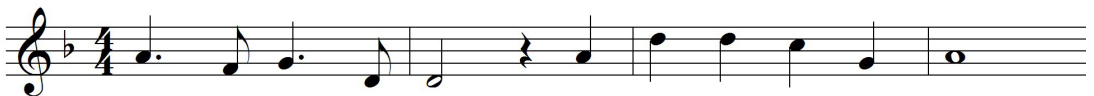
AND PRAYER OF CONFESSION *(in unison)*

Merciful God, you made us in your image, with a mind to know you, a heart to love you, and a will to serve you. Help us Lord, for our knowledge is imperfect, our love is inconsistent, and our obedience is incomplete. Day by day, we fail to grow into your likeness. Forgive us and teach us again who we are in Christ Jesus.

A moment of silence for personal reflection and confession.

ASSURANCE OF PARDON

CONGREGATIONAL RESPONSE *(sung twice)*



Bless the Lord, my soul, and bless God's ho - ly name.



Bless the Lord, my soul, who leads me in - to life.

*Text and Music © 1984, 1998 Les Presses de Taizé (admin. GIA Publications, Inc.)
All rights reserved. Reprinted under OneLicense.net #A-716211*

HEARING THE WORD

PRAYER FOR ILLUMINATION

Darryl Brown

FIRST LESSON Psalm 130 (*p. 573 in pew Bible*)

Darryl Brown

SECOND LESSON Ephesians 4:25-5:2 (*p. 194 in pew Bible*)

Rachel Pedersen

One: The Word of the Lord.

All: **Thanks be to God.**

SERMON

Living Grace

Rachel Pedersen

RESPONDING TO THE WORD

† HYMN 347

Forgive Our Sins as We Forgive

DETROIT

SACRAMENT OF THE LORD'S SUPPER

Rebecca Kirkpatrick

You are invited to come forward, using the center aisle, to partake of the Lord's Supper by intinction (dipping a piece of bread in the cup); return to your seat using the side aisle.

Gluten- and casein-free elements are on the center table.

You are invited to bring your morning offering to the baskets when you come forward.

THE INVITATION TO COMMUNION AND THE GREAT THANKSGIVING

One: The Lord be with you.

All: **And also with you.**

One: Lift up your hearts.

All: **We lift them to the Lord.**

One: Let us give thanks to the Lord our God.

All: **It is right to give our thanks and praise.**

THE LORD'S PRAYER (*in unison*)

Our Father who art in heaven, hallowed be thy name, thy kingdom come, thy will be done, on earth as it is in heaven. Give us this day our daily bread. And forgive us our trespasses, as we forgive those who trespass against us. And lead us not into temptation, but deliver us from evil. For thine is the kingdom, and the power, and the glory, forever. Amen.

THE COMMUNION OF THE PEOPLE

PRAYER OF DEDICATION

Rachel Pedersen

† **HYMN 335** Though I May Speak

O WALY WALY

† **SENDING AND PASSING OF THE PEACE**

One: The peace of Christ be with you.

All: **And also with you.**

POSTLUDE

Worship Notes

SANCTUARY FLOWERS

Given to the glory of God and in loving memory of
Richard and Sarah Furniss

CHAPEL FLOWERS

Given to the glory of God and in loving memory of
John J. Stetzer Jr.

ASSISTING WITH COMMUNION

Deacon Darryl Brown

PLAYING THE CARILLON

Rob Mygatt

GREETING AND HOSTING TODAY

Representatives of Membership Council and new members

Announcements

CHAPEL CLOSING. The Chapel will be closed from August 10 until after Thanksgiving for stained glass window restoration. Beginning next Sunday and until the work is completed and scaffolding removed, the 8:00 a.m. worship service will be held in the front of the Sanctuary.

FALL CHOIR REGISTRATION. Opportunities for all ages from kindergarten through adults! NEW: “Wednesdays Together” program for grades K-5 from 4:30-6:00 p.m., led by Edward Landin and the Rev. Rachel Pedersen, followed by Youth Chorale (now for grades 6-12) from 6:00-7:00 p.m. Intergenerational handbell choir: Sundays, 11:15 a.m.-12:15 p.m. (ability to read music required). StephanieSpeakman@bmpc.org, ext. 8836.

SING WITH OUR SUMMER CHOIR. All singers (ages 12 to adults) are invited for a short rehearsal on Sundays at 9:00 a.m. in the choir loft, then to stay and sing for the 10:00 a.m. service. Summer choir is simple (one anthem and hymns) and informal (no robes). Come when you can; no need to sign up in advance. StephanieSpeakman@bmpc.org, ext. 8836.

SUMMER READING. Summer is a great time to read a book about spiritual direction from our Book Center, which is accessible on weekdays from 9:00 a.m. to 5:00 p.m. (the key is available at the Reception Desk). You also may borrow books from our Converse House Library. [Kat MacMurray](mailto:KatMacMurray), KatRMac2@gmail.com.

Today

CAMP KIRKWOOD 2015. This afternoon, our middle and high school youth depart for Camp Kirkwood in the Poconos. This is the 43rd year for our popular BMPC-run camp and the Rev. Kellen Smith will head the leadership team. Please keep the campers and staff in your prayers as they experience a week of fun, faith and fellowship from August 9 – 15.

SUMMER SUNDAY SCHOOL. Care is available for infants through 3-year-olds in the nursery, Ed. Bldg. Rm. 102, from 7:45 - 11:00 a.m. with special activities and a story during the 10:00 a.m. hour. Children age 4 – grade 3 worship together in Ed. Bldg. Rm. 202 at 10:15 a.m. (after the Childrens’ Moment in the Sanctuary). Please pick up your children in the Ed. Bldg. at 11:00 a.m. before “Lemonade on the Lawn.” MaryRichards@bmpc.org, ext. 8811.

SUNDAY MORNING DISCUSSION GROUP. Sundays, 8:45 a.m., Conference Room. Discussion of *Falling Upward – A Spirituality for the Two Halves of Life* by Richard Rohr. CarolSchmidt@bmpc.org, ext. 8819.

Caring & Sharing

DONATE SCHOOL LIBRARY BOOKS. Our mission partner WePAC's library initiative renovates and re-opens elementary school library spaces, collects and donates books, and trains community volunteers so that the libraries may be maintained. At least 5,000 books are needed to open a new school library. If you'd like to donate books, go to www.amazon.com, click on "wish lists" and type in WePAC for suggestions.

SERVE WITH THE PASTORAL CARE OFFICE. Provide rides for older adults, make meals for those recuperating, knit prayer shawls for those in need of prayer and solace, or visit the homebound. Contact: loriebenovic@bmpc.org or ext. 8833.

FEED THE HUNGRY. Your contributions to the white hunger envelopes in the pews provide food for emergency food cupboards, homeless shelters, and hunger relief organizations in our area.

REQUEST PASTORAL CARE. Our Care Team is available for home and hospital visits and prayer. You may submit prayer requests on the cards found in the pew racks or visit www.bmpc.org/prayer. LorieBenovic@bmpc.org, ext. 8833.

SHARE HOSPITAL INFORMATION. Due to current privacy laws, it is more difficult for our pastors to know when BMPC members have been admitted to a hospital. Call the church office at 610-525-2821 if you or any one you know is hospitalized, and let us know if and when you volunteer at any local hospitals.

This Week's Calendar

For more information visit our website at www.bmpc.org, call the church office (610-525-2821), or contact communications@bmpc.org.

Today, August 9, 2015

The Rev. Rachel Pedersen is preaching.

- 8:00 a.m. Worship with Communion, Chapel
- 10:00 a.m. Worship with Summer Choir, Sanctuary
- 7:45 a.m. Childcare for infants - age 3, Ed. Bldg. Rm. 102
(through 11:00 a.m.)
- 8:45 a.m. Sunday Morning Discussion Group, Conference Room
- 10:00 a.m. Grades 4 - 12 in worship, Sanctuary
- 10:15 a.m. Sunday School: "Summer Chapel" age 4 - grade 3, Ed. Bldg.
- 11:00 a.m. Lemonade on the Lawn
- 1:00 p.m. Camp Kirkwood Check-In, Court

Monday, August 10

- 9:30 a.m. DanceFit, Gymnasium
- 6:30 p.m. Membership Council, home of Suzanne VanderVeer

Tuesday, August 11

- 10:30 a.m. Tai Chi, Gymnasium

Wednesday, August 12

- 9:00 a.m. Walk for Life!, meet in Main Parking Lot
- 9:30 a.m. DanceFit, Gymnasium

Thursday, August 13

- 10:00 a.m. Artists' Gathering, Gloucester
- 6:00 p.m. Worldwide Ministries Meeting, home of Eric Swanson

Friday, August 14

- 9:30 a.m. DanceFit, Gymnasium
- 5:00 p.m. Wedding Rehearsal, Sanctuary

Saturday, August 15

- 4:30 p.m. Willcox/Maskarinec Wedding, Sanctuary

Sunday, August 16

The Rev. Rebecca Kirkpatrick will preach.

Contact Information

Bryn Mawr Presbyterian Church

625 Montgomery Avenue, Bryn Mawr, PA 19010

(P) 610-525-2821 • (F) 610-525-9476

www.bmpc.org (for program information, calendar, and staff directory)

[Facebook.com/BrynMawrPC](https://www.facebook.com/BrynMawrPC) • [Twitter.com/BrynMawrPres](https://twitter.com/BrynMawrPres)

24/7 Answering Service for Pastoral Emergencies: 610-525-2821

Main Line Adult Day Center: 610-527-4220

The Middleton (Counseling) Center: 610-525-0766 • JoyceKrajian@bmpc.org

The Weekday School (Preschool): 610-525-2821, ext. 8840